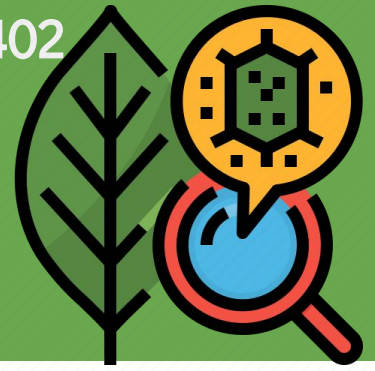
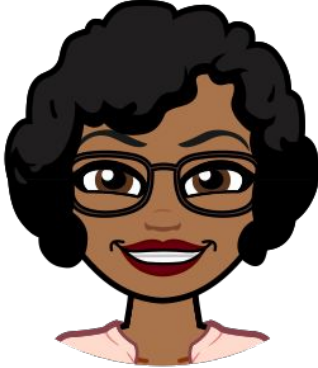


# Biology I



## Ms. Fields



Communicate with **Remind101**

Text @e2gf42d to 81010

## What do I need for class?

- 1" binder
- Chromebook & charger
- Pens and pencils

## Class Expectations

**Prompt & Prepared:** Come to class on time and with all of your necessary supplies. Don't forget your mask!

**Operate with Respect:** Respect yourself and others. Respect our class time and our materials.

**Do Your Best:** Be responsible for your learning; work hard and do your best. Don't be afraid to ask for help.

## Course Description

This course begins with a consideration of the living condition and discussion of the unique properties of living organisms that set life apart from the non-living. It continues with molecular and cellular biology, from which it moves logically into reproduction and genetics. An understanding of genetics gives meaning to organized variation, evolution and methods of scientific classification units dealing with microbiology and plant and animal phylum. Scholars should expect daily warm ups and exit tickets in addition to 2-3 homework assignments a week. Within each unit, there will be 1 to 2 mastery checks to ensure all students are on the right track for mastery (>80%) on the unit test.

## 10 Units of Study

- Unit 1: Organic Compounds
- Unit 2: Cells
- Unit 3: Cellular Reproduction
- Unit 4: Cell Physiology
- Unit 5: DNA & Protein Synthesis
- Unit 6: Biotechnology
- Unit 7: Genetics
- Unit 8: Evolution
- Unit 9: Ecology
- Unit 10: Characteristics of Life

“A MIND IS LIKE A PARACHUTE. IT DOESN'T WORK IF IT IS NOT OPEN.” - Frank Zappa

## Work & Attendance

- Biology moves at a quick pace and there are activities and labs that are hard to make up. Please make every effort to be in class on time, every day. Your attendance and participation counts!
- If you are absent, **it is your job to get notes and assignments you missed.**
- Honor timeframes and due dates. --turn your work in on time!
  - Packets are always due the day of a unit test
  - Pay attention to Canvas assignments and their due dates

## Academic Integrity

The WMHS Science department is committed to the academic, social, and ethical development of each of our scholars. We feel that being academically dishonest inhibits a scholar's achievement and compromises the trust between teacher and student, which is fundamental to the learning process. There is zero tolerance in regard to cheating/plagiarism. **If a student cheats or plagiarizes on any class work or assessment (tests/quizzes), that student will receive a zero** and their parent/guardian will be notified. In addition, **any student who assists another student in the act of cheating/plagiarizing will experience the same consequence.** Students will have an opportunity to complete the assignment or take the assessment to assist the student in mastery of the content; changing the grade is up to teacher discretion.

## Tips for Success

- **Don't be too quick to dismiss your mistakes** as "stupid". The pros keep track of their mistakes and learn from them.
- **Ask for help.** Do this earlier rather than later. Smart students ask for help. Use our Remind for the quickest response.
- **Make a habit to regularly check Canvas and Powerschool!** Although many assignments are submitted and graded in Canvas, the "final" grades shown may not be properly weighted and do not contain assignments that were not graded in Canvas. For official grades, please continue to check Powerschool. *Families* - If you need assistance accessing the parent portal, please contact the school.
- **Keep open and honest lines of communication** with your teacher – if something is going on, let her know!
- **Develop good study habits** – Ms. Fields can help you in this area. All you need to do is ask (tip #2)!

## How will I be graded?

Your assignments will be broken down into three major categories:

1. **Prepare:** Smaller assignments that allow students to practice new learning.
2. **Rehearse:** Assignments that provide students with feedback on progress towards mastery of standards
3. **Perform:** Cumulative and/or formative assessment that measure mastery of one or multiple standards

**Please note:** Late assignments will be accepted for a grade until the end of the next unit (maximum grade of a 80). After the end of the next unit, the highest grade for late work will be a 50%. **A grade of zero will be assigned if no reasonable attempt is made for the assignment.**



Scan here to learn more about the grading policy.